



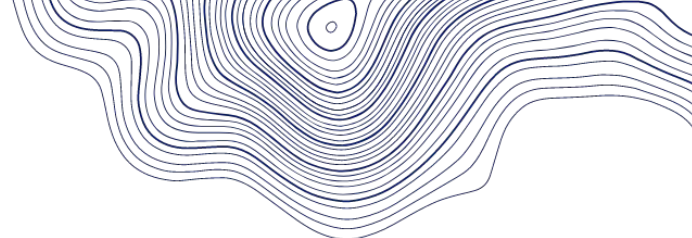
PRESENTS

**THE GALLOWAY  
CADILLAC-LARDER LAKE  
BREAK PROJECT**

2023-07-20

# FORWARD-LOOKING STATEMENTS

- Statements contained in this presentation that are not historical facts are “Forward-Looking Statements”
- Forward-Looking Information can be identified by the use of words such as “plans,” “expects,” “estimates,” “anticipates,” “potential,” “believes,” or variations of such words and phrases or statements that certain actions, events or results “may,” “could,” “would,” “might,” or “occur” or “be achieved.”
- Forward-Looking Information involves known and unknown risks, uncertainties, and other factors which may cause the actual results, performance or achievements of the Company to be materially different from any future results, performance or achievements expressed or implied by the Forward-Looking Information ...
- Such risks and other factors include risks related to the availability of financing on commercially reasonable terms; future price of metals; changes in estimated mineral resources; accidents, effects of weather and other natural phenomena and other risks associated with the mineral exploration industry ...
- Except as required by Law, the Company does not assume any obligation to release publicly any revisions to Forward-Looking Information contained in this presentation after the date hereof to reflect the occurrence of unanticipated events.

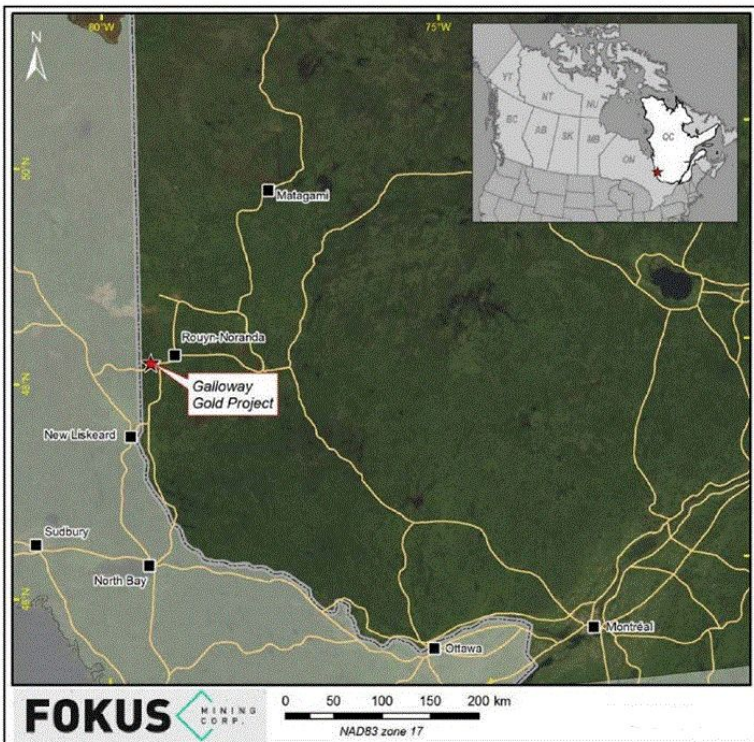


WHO WE ARE

# FOKUS MINING CORP

We are a mineral resource company actively acquiring and exploring precious metals deposits located in the province of Quebec, Canada.

*Fokus is currently developing the Galloway Project and its vast mineral potential and has sold its other main projects to Mosaic Minerals Corp in which it owns 5.3 million common shares. Mosaic is exploring for strategic minerals in Quebec.*





IN FOCUS  
**OUR TEAM**



**JEAN  
RAINVILLE**

President and Chief  
Executive Officer



**SYLVAIN  
CHAMPAGNE**

Secretary and Chief  
Financial Officer



**CIRO  
CUCCINIELLO**

Director



**STEVE  
DUCHESNE**

Director



**GILLES  
LAVERDIÈRE**

Director



**MARC-ANDRÉ  
LAVOIE**

Director



**JEAN-DAVID  
MOORE**


Director






FOKUS MINING CORP

# OUR SHORT-TERM PRIORITIES



TO COMPLETE AN EXTENSIVE  
DRILLING PROGRAM ON  
GALLOWAY



TO UPDATE THE MARCH 2023  
RESOURCE ESTIMATE ON  
GALLOWAY



FM

## THE GALLOWAY PROJECT

# WORLD-CLASS LOCATION

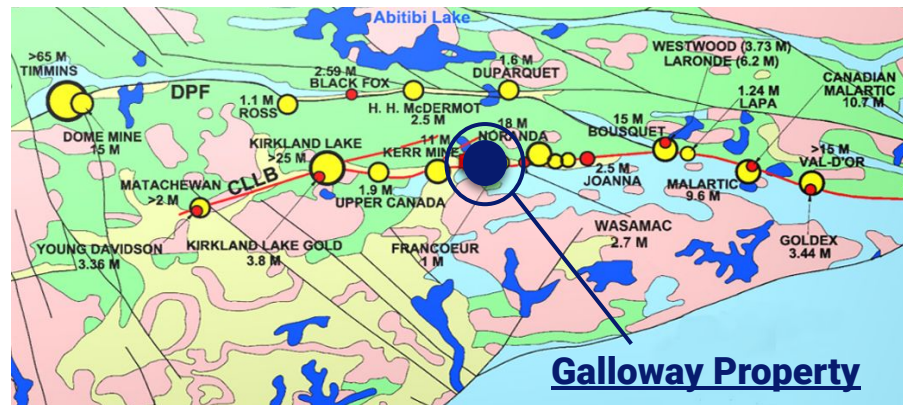
The Galloway property is located less than 30 km west of the Rouyn-Noranda mining district and is easily accessible via Trans-Canada Highway 117. The property is also parallel to a major railway. It consists of three mining concessions and 95 claims covering a total area of 2,668 hectares. The Galloway property is the result of the amalgamation of the Hurd, Ogima Nord, Renault Bay, Sandborn, Perron, Cadillac, Francoeur and Lac Fortune claims blocks.

This project is located in the heart of one of the most prolific gold faults in the world, the Cadillac-Larder Lake Fault Galloway is in close proximity to numerous mines and deposits including the mining camps of Kirkland Lake, Noranda, Cadillac, Malartic and Val-d'Or.

More than 100 million ounces of gold have been extracted from these mining camps in the last 100 years.

**KIRKLAND LAKE: 25 M OZ**  
**LARDER LAKE: 11 M OZ**

**NORANDA: 18 M OZ**  
**BOUSQUET: 15 M OZ**

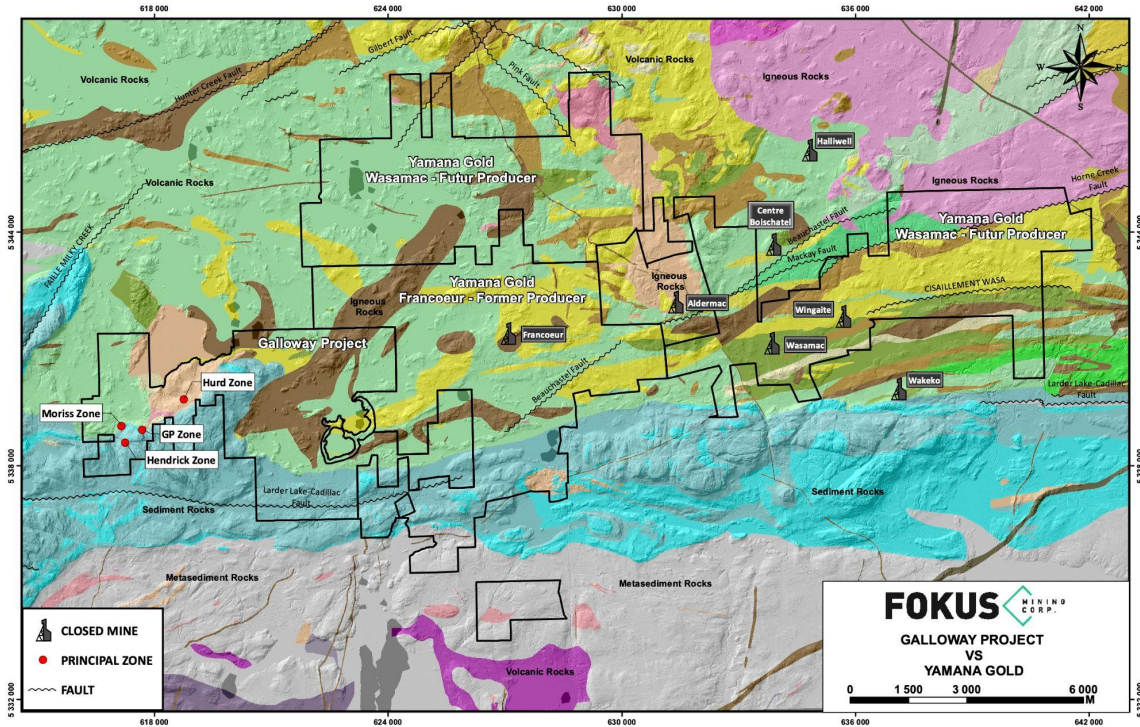






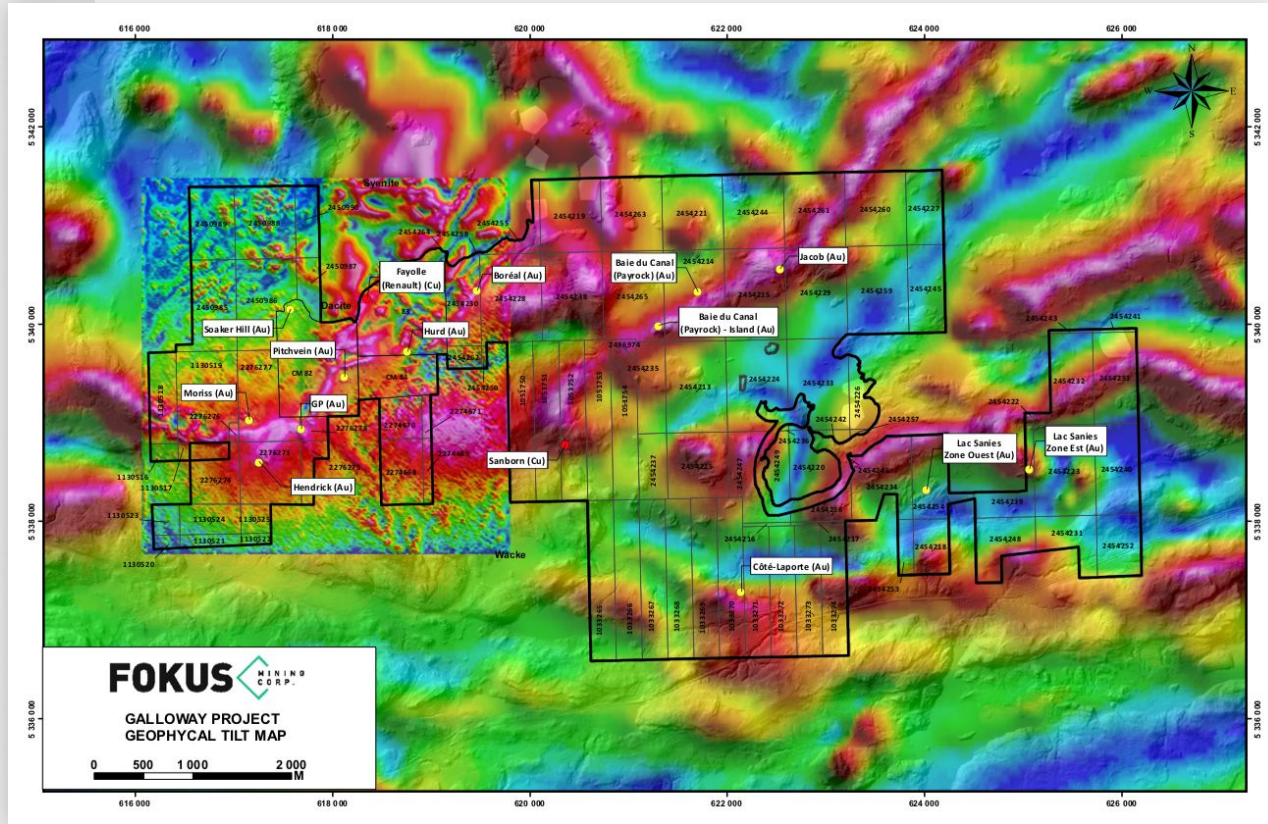
# GALLOWAY GEOLOGICAL MAP

In total, Fokus' Galloway covers a 3-km-wide corridor of gold bearing structures across a total length of 10 km along the Larder-Lake-Cadillac Break (LLCB).



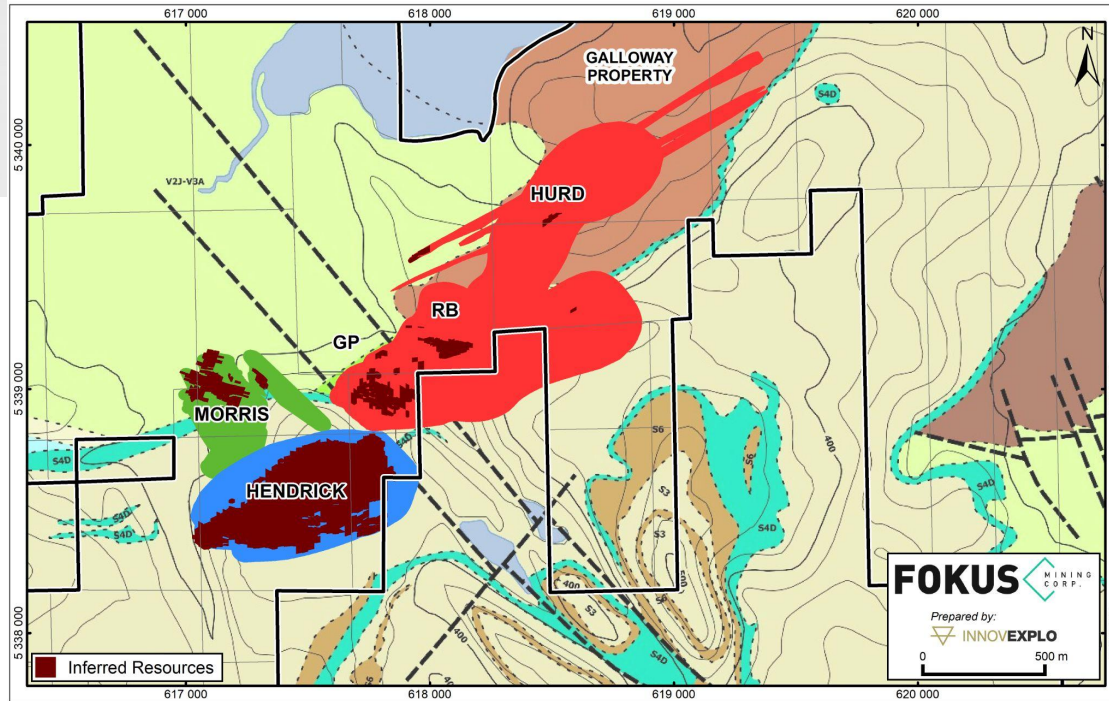


# GALLOWAY GEOPHYSICAL TILT MAP

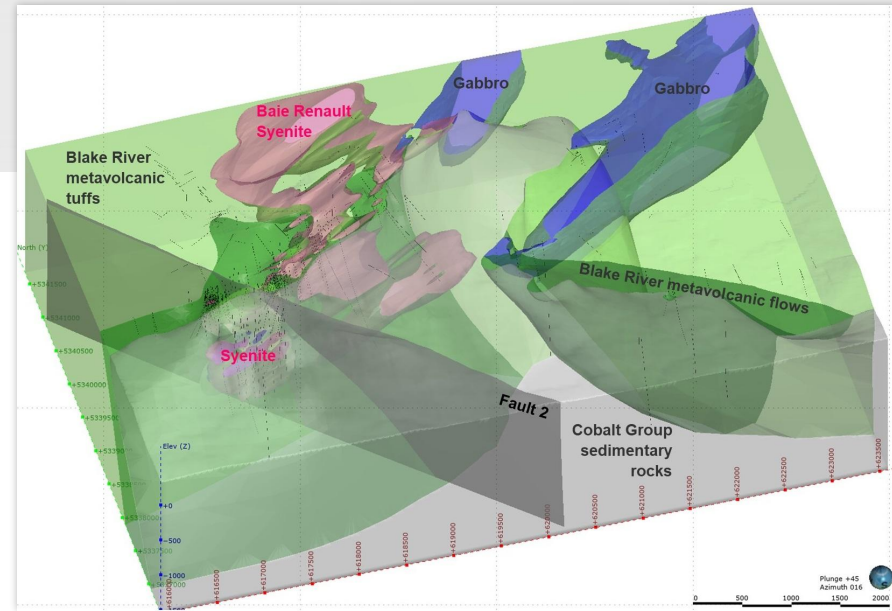
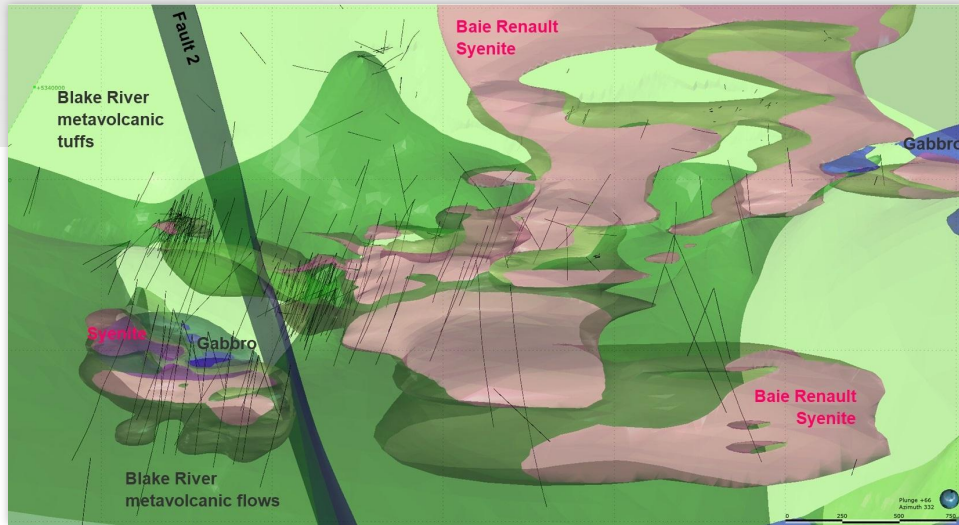




# THE GALLOWAY GOLDEN TRIANGLE

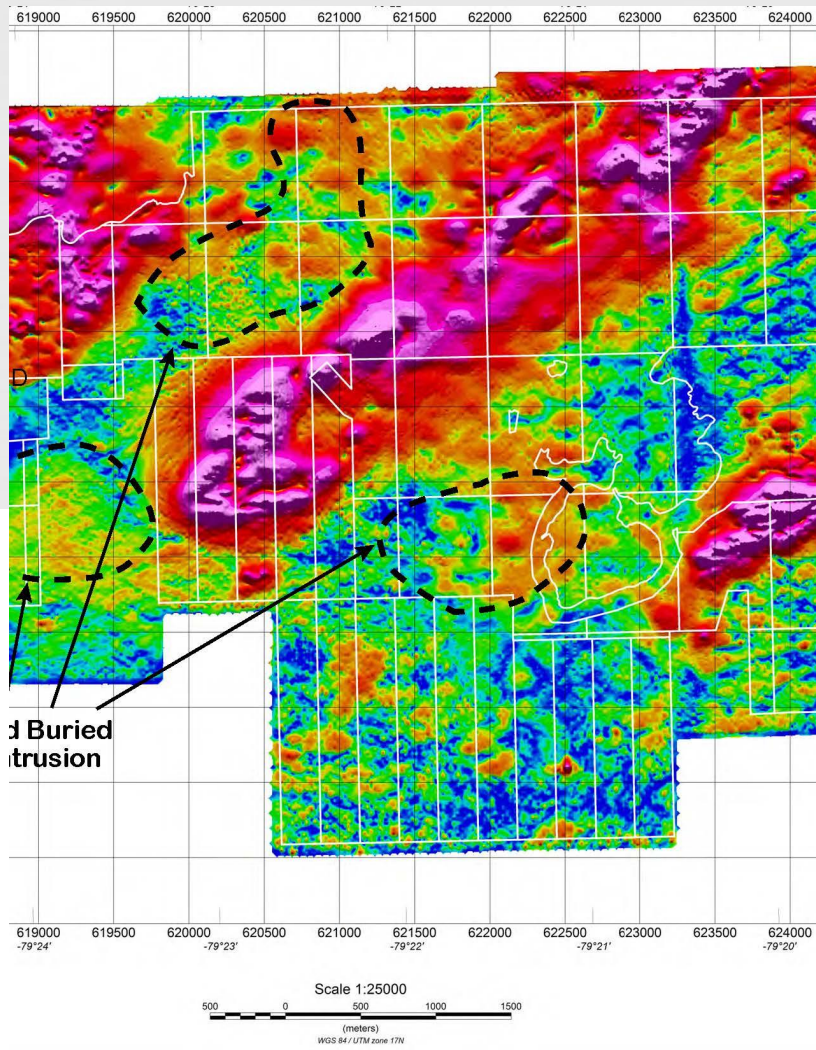


# THE GALLOWAY GOLDEN TRIANGLE





# BURIED INTRUSIONS EAST OF HENDRICK AND GP ZONES





NEW DISCOVERY

## THE WESTERN PORTION OF GALLOWAY

Several mineralized zones have now been identified on the western portion of Galloway where drilling is in progress : Moriss, Hendrick, RB and northeast of RB several indices including Hurd and the Pitchvein Zone.

Recently, a **new discovery** was made east of the GP Zone (drill holes GA-21-46 and GP-21-47). The geology is similar to that of the large Hendrick mineralized area and the adjacent RB Zone.

This was rapidly followed by another gold discovery (drillhole GA-21-59 ) that intersected several gold values.

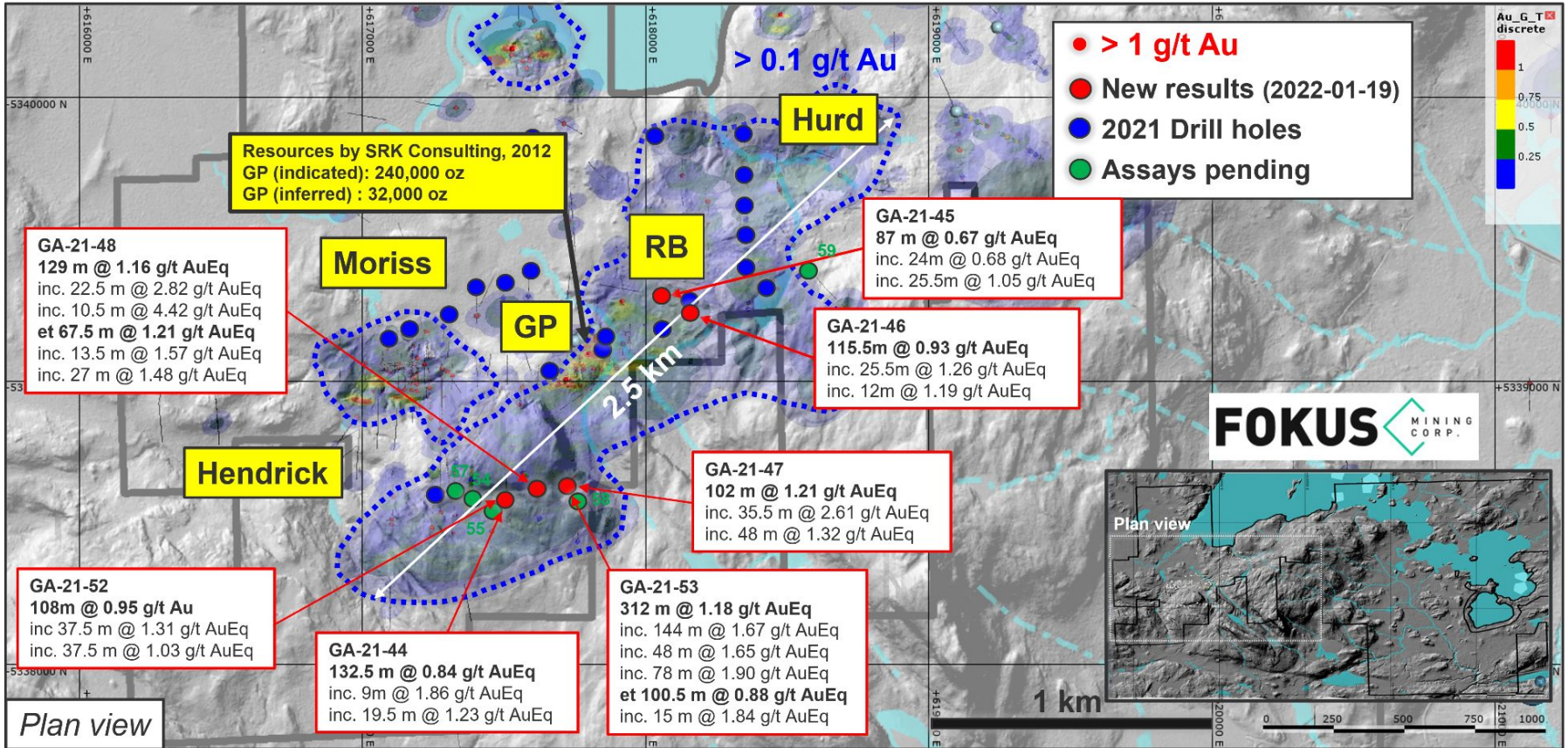
**Note that as shown on page 11, several buried intrusions remain to be tested in that sector of Galloway.  
The GP zone has a different geological signature than other surrounding known mineralized sectors.**

The high definition airborne geophysical survey completed on the entire property had indicated several new targets. A first long hole was drilled (GA-21-59) in one of the large targets located one km East of Hendrick.





## Projet Galloway - Moriss, Hendrick, GP, Hurd Drill holes results Fokus 2020-2021



AuEq have been calculated at a price of Gold of 1818 \$/oz US, Silver at 23.17 \$/oz US and Copper at 4.54 \$/lb

# GP ZONE

IN FOCUS

The GP showing lies immediately at the contact with the syenite stock. It consists of pervasive gold mineralization within a mineralized envelope of 230 m in length by over 100 m in width and over 300 m in depth (as per the results to date).

Numerous gold intervals of over 1 g/t Au across widths in excess of 20 m to date. The best gold intersection returned 2.19 g/t Au over 19.5 m in hole VHD-09-13.

A 43-101 Mineral Resource Estimate by SRK Consulting (2012) gave Indicated Resources of 18,140,000 t at 0.41 g/t Au and Inferred Resources of 2,510,000 t at 0.39 g/t Au using a cut-off grade of 0.21 g/t Au.

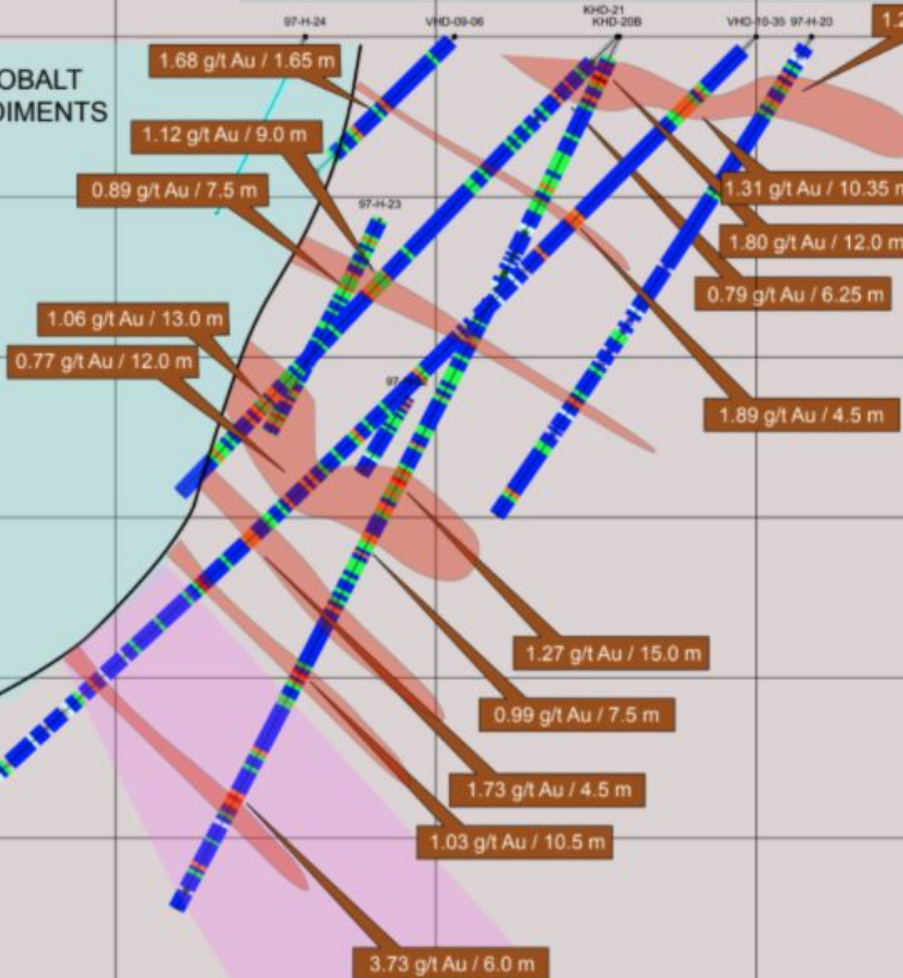
The resource estimate does not correspond to the entire GP showing but to a pit shell design as required by NI 43-101 regulation. (See report on SEDAR-Vantex).

The GP Zone appears not be related to the adjacent mineral zones. It is cut-off on each side by NW-SE faults. It is opened at depth.



# GP SHOWING - SECTION 617775E

COBALT  
SEDIMENTS



**GP ZONE -  
DRILLING  
RESULTS**

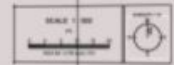
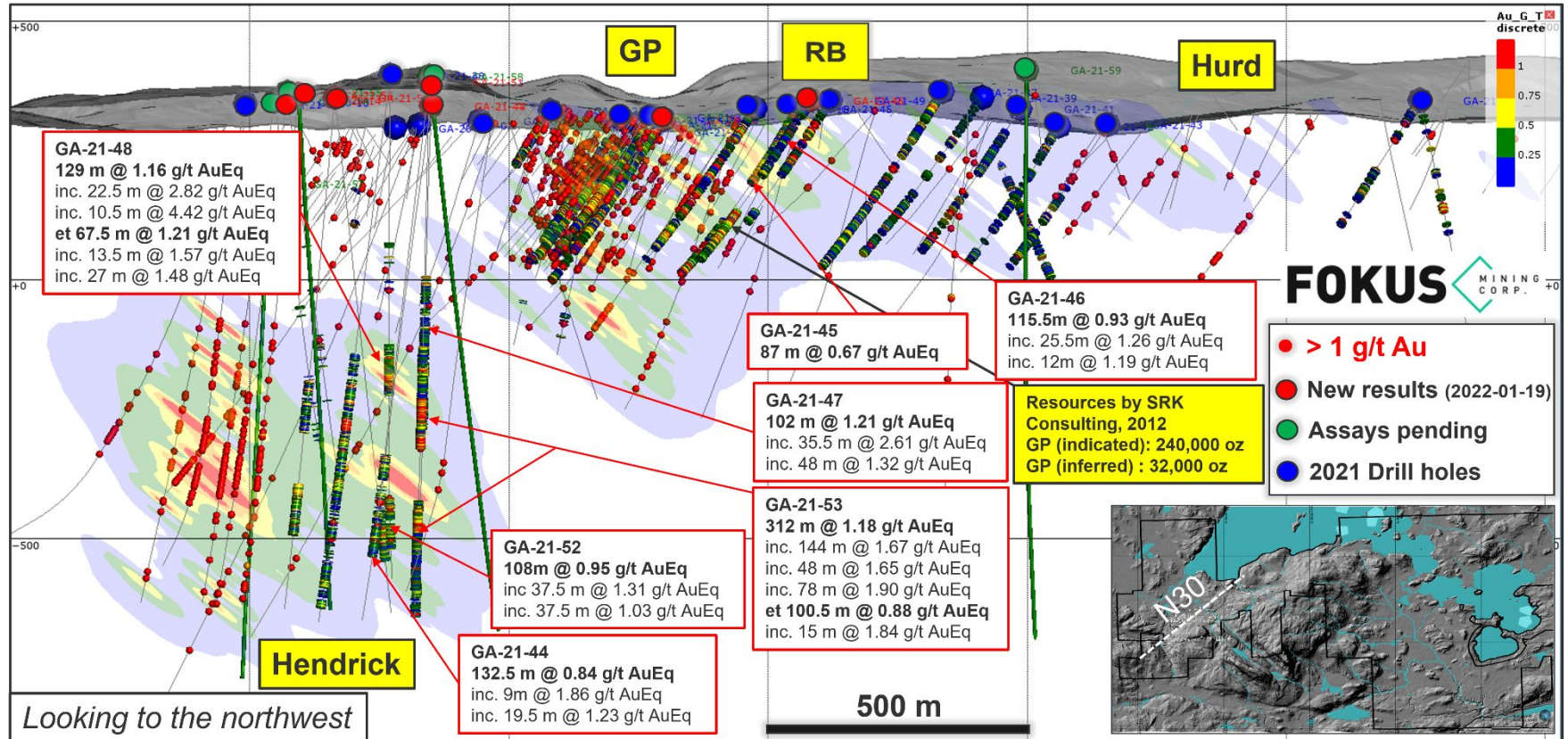




Figure 2

### Projet Galloway - Moriss, Hendrick, GP, Hurd Drill holes results Fokus 2020-2021





# HENDRICK ZONE

IN FOCUS

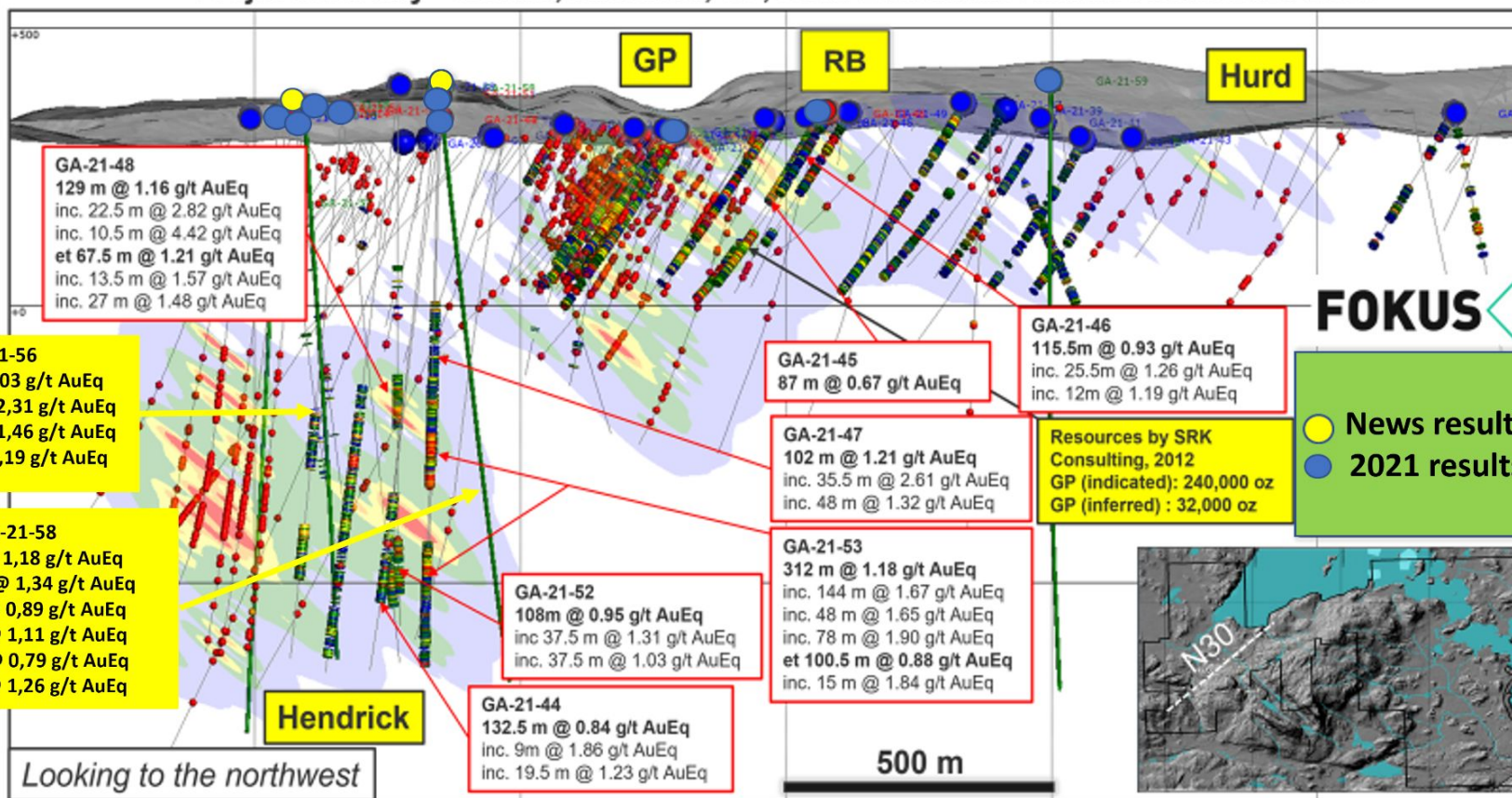
The Hendrick showing was discovered by Kerr-Addison in the 1980's.  
It is located some 500 m south of the GP and Moriss zones.

The Hendrick zone is genetically related to the Renault Bay syenite as it lies within or in close proximity to what seems to be an apophysis of the intrusion. It is thus related to the GP and Moriss zones due to the strong similarities between them in the nature of the gold mineralization, its distribution and its geochemistry, as well as the spatial relation.

The five holes to date have intersected the zone over a 700 m strike length, and it is presently open in all directions. The Hendrick zone is made of two parallel mineralized envelopes that are 150 and 170 m thick, dipping to the north and plunging to the northwest.



# Projet Galloway - Moriss, Hendrick, GP, Hurd Drill holes results Fokus 2020-2021



# MORISS ZONE

IN FOCUS

The Moriss showing lies about 500 m west of the GP showing. It is spatially associated to an apophysis of the main syenite intrusion.

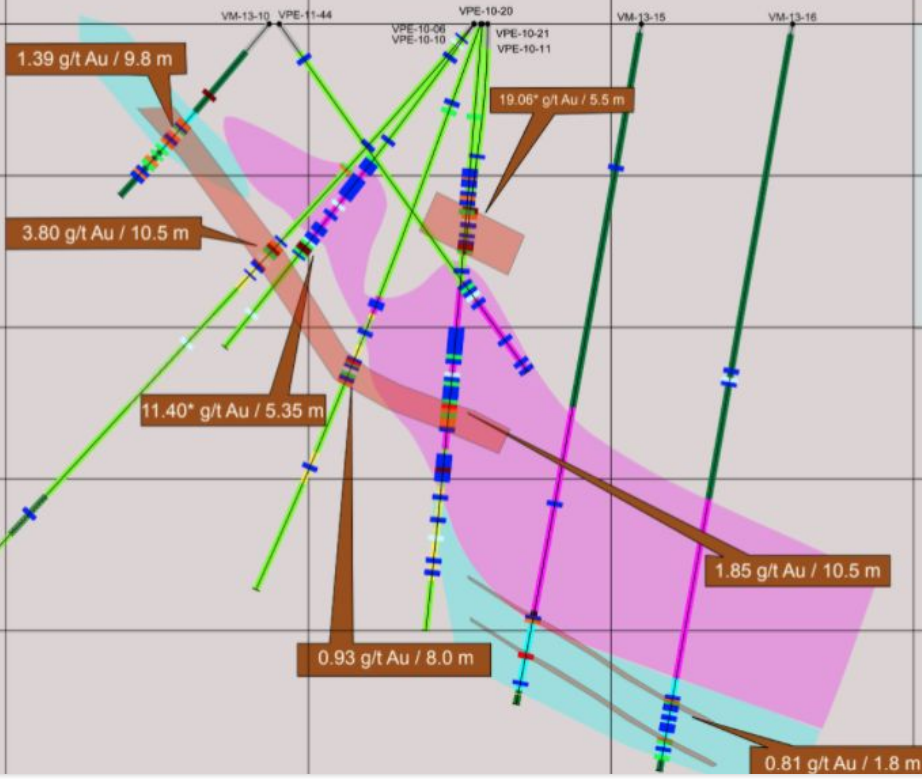
The Moriss showing was originally identified as a geophysical target in 2009 and was discovered by drilling in October 2010. It is actually a composite occurrence: there appears to be three main gold-bearing zones, 1.5 to 10.5 m thick, at the near-surface level (North zone), 60-70 m depth (Moriss zone) and at 115-135 m depth (New zone), though several deeper holes have intersected up to 5 discrete gold-bearing structures which warrant further investigation.

It is notable that coarse gold is often found in the Morriss showing. Many assays over 30 g/t Au are found in the Morriss zone with an uncut interval of 59.51 g/t Au over 6.2 m in hole VPE-12-50 (with an individual assay of 285.93 g/t Au over 1.0 m). Free gold is found in pyrite-rich smoky quartz veining, breccia and stockworks within nearly massive intermediate tuffs.

The recent work indicates the potential for gold mineralization perpendicular to the main shear god mineralized system and the potential in that area remains relatively untested at depth.



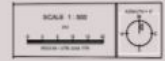
# MORRIS SHOWING - SECTION 617175E



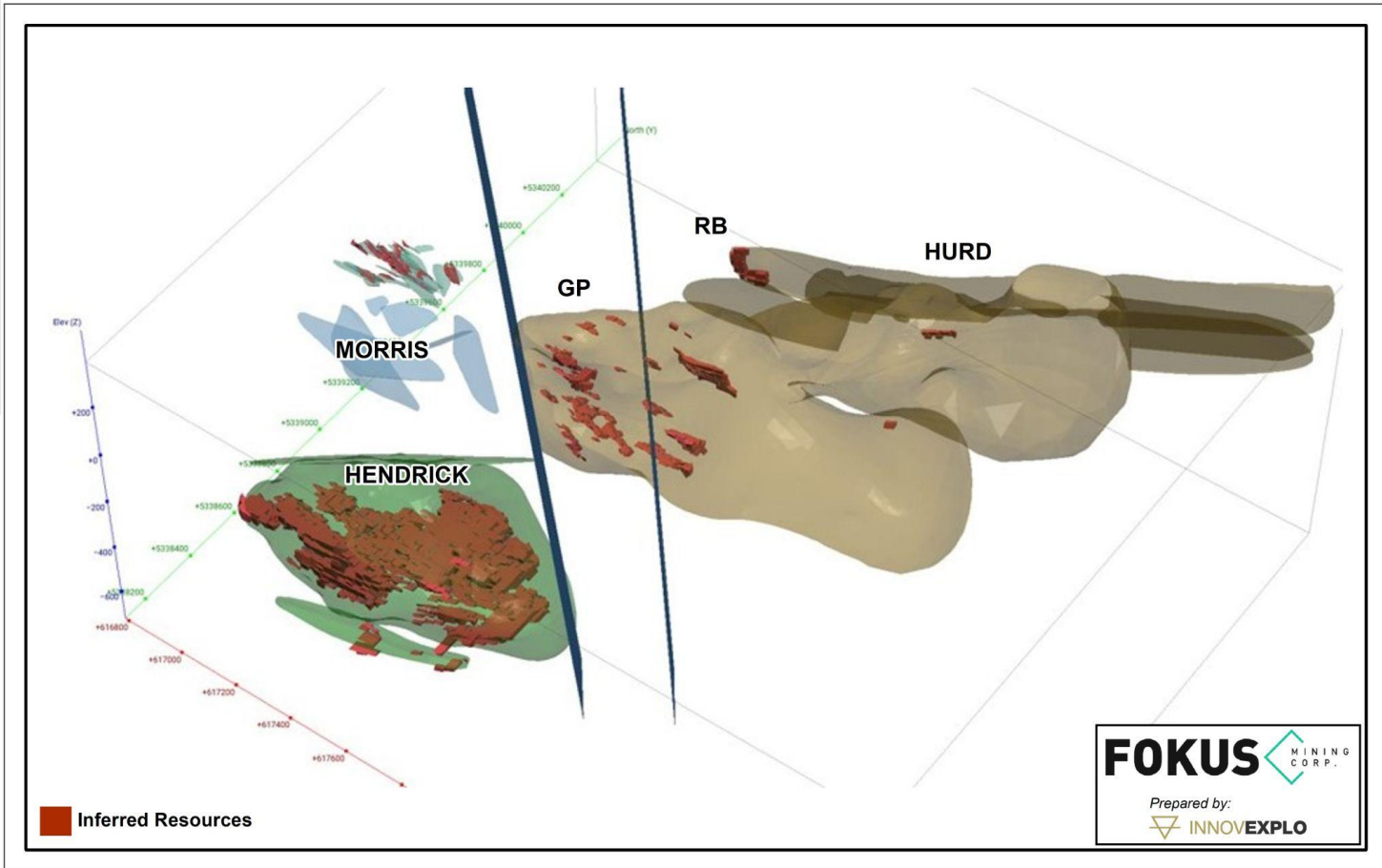
Au ppm Interval	Litho Legend	Description
17.2	BR	Breccia
5.0	I2	Intermediate intrusive
3.0	I2D	Syenite
1.0	I3	Mafic Intrusive
0.5	I3A	Gabbro
0.5	M8	Schist
0.1	M25	Mylonite
	OB	Overburden
	V16	Rhyolite
	Q	Quartzite
	TL2	Intermediate Lappi Tuff
	TL3	Mafic Lappi Tuff
	TU1	Felsic Tuff
	TU2	Intermediate Tuff
	TU3	Mafic Tuff
	V2	Intermediate Volcanics
	V2J	Andesite
	V3	Mafic Volcanics
	V3A	Andesitic Basalt
	V3B	Basalt



# MORISS ZONE - DRILLING RESULTS





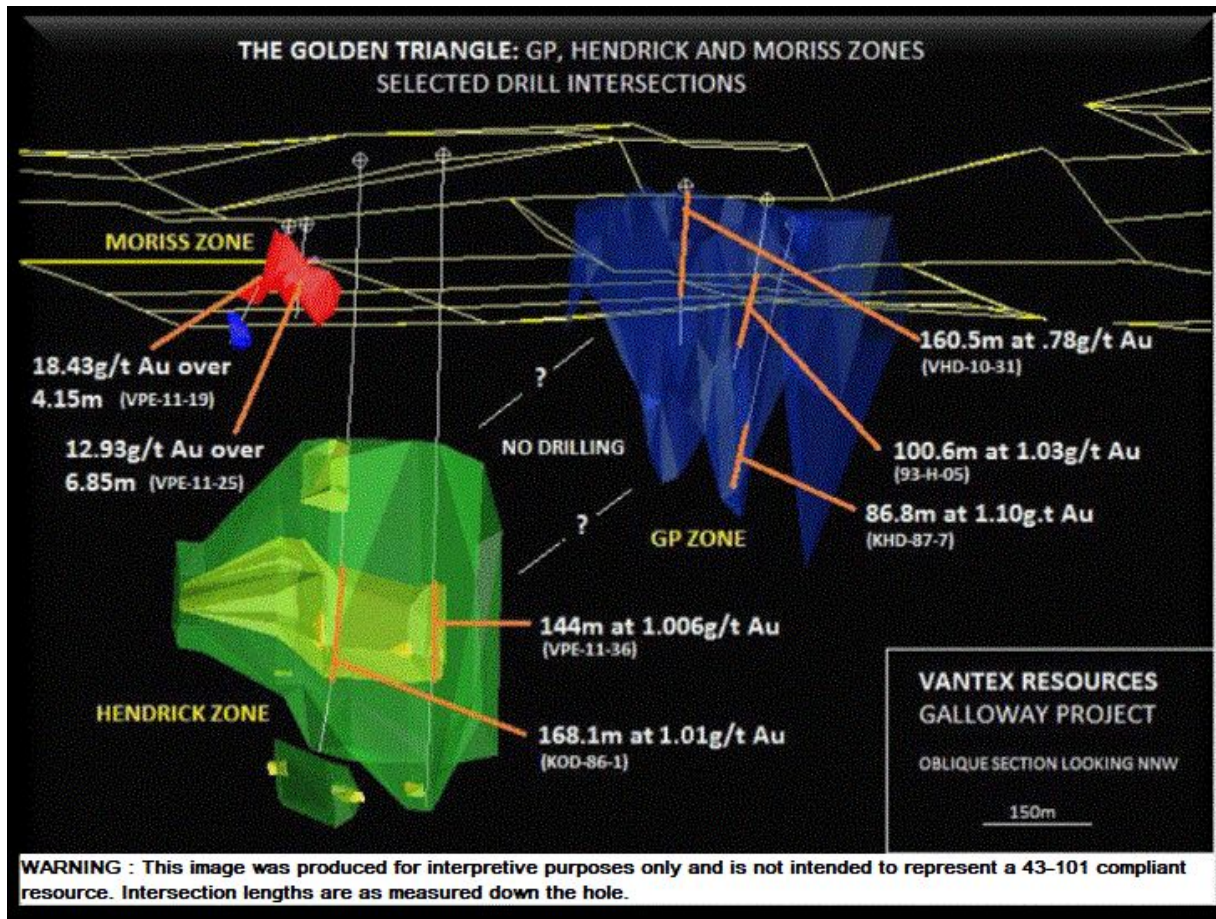


# NI 43-101 RESOURCE, MARCH 2023

Galloway Gold Project Inferred Mineral Resource (at 0.9 g/t Au cut-off)			
Zones	Tonnes (t)	Grade (g/t Au)	Ounces (oz Troy Au)
Hendrick Zone	37,989,000	1.06	1,290,000
GP Zone	1,445,000	0.98	45,600
RB Zone	1,161,000	0.96	35,900
Hurd Zone	87,000	1.00	2,800
Moriss Zone	514,000	2.74	45,300
<b>Total Inferred</b>	<b>41,195,000</b>	<b>1.07</b>	<b>1,419,600</b>

Inferred Resources				
Gold Price (US\$)	Cut-Off grade	Tonnes (t)	Grade (g/t Au)	Ounces (Oz Troy Au)
1,960	0.80	57,546,000	0.97	1,788,100
1,850	0.85	50,411,000	1.00	1,632,500
<b>1,750</b>	<b>0.90</b>	<b>41,195,000</b>	<b>1.07</b>	<b>1,419,600</b>
1,660	0.95	36,410,000	1.10	1,283,400
1,575	1.00	30,595,000	1.15	1,128,400

The Estimate prepared by InnovExplo Inc assumes 100% underground bulk mining techniques . No review of the GP zone with an open pit shell design as was completed in 2012 ( see slide no 14 ) has been prepared yet.

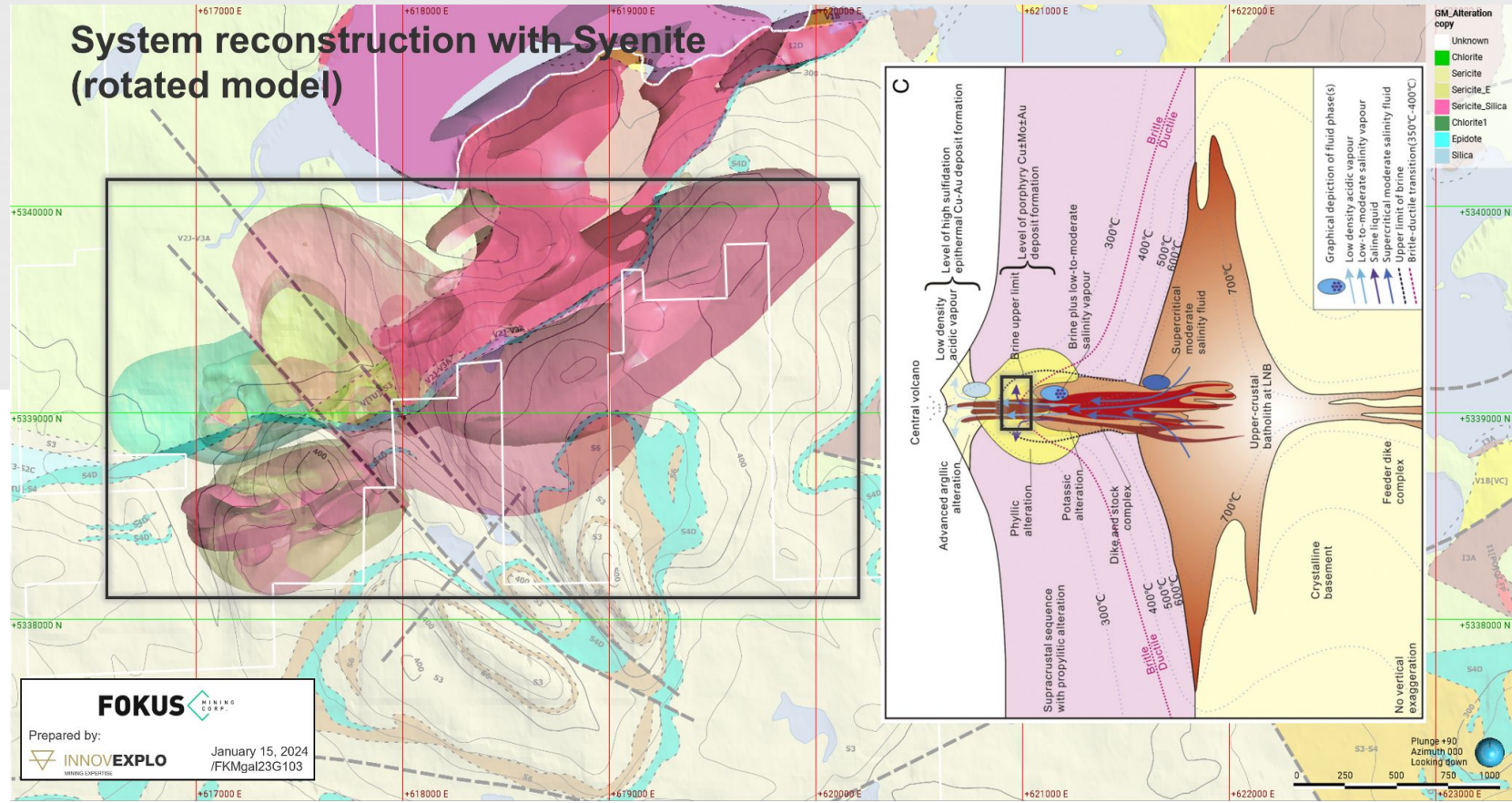


# THE GOLDEN TRIANGLE GP, HENDRICK AND MORISS ZONES





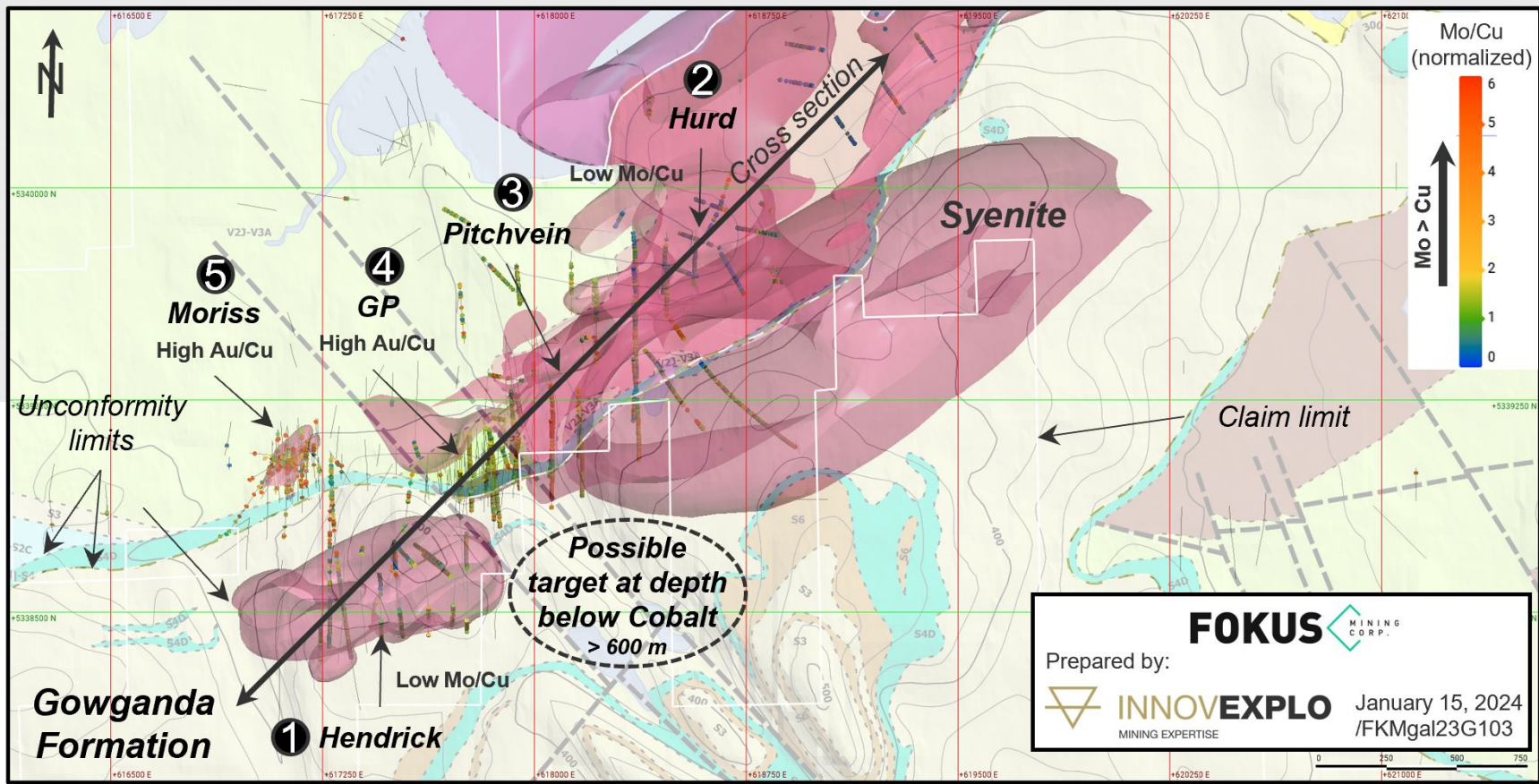
# System reconstruction with Syenite (rotated model)



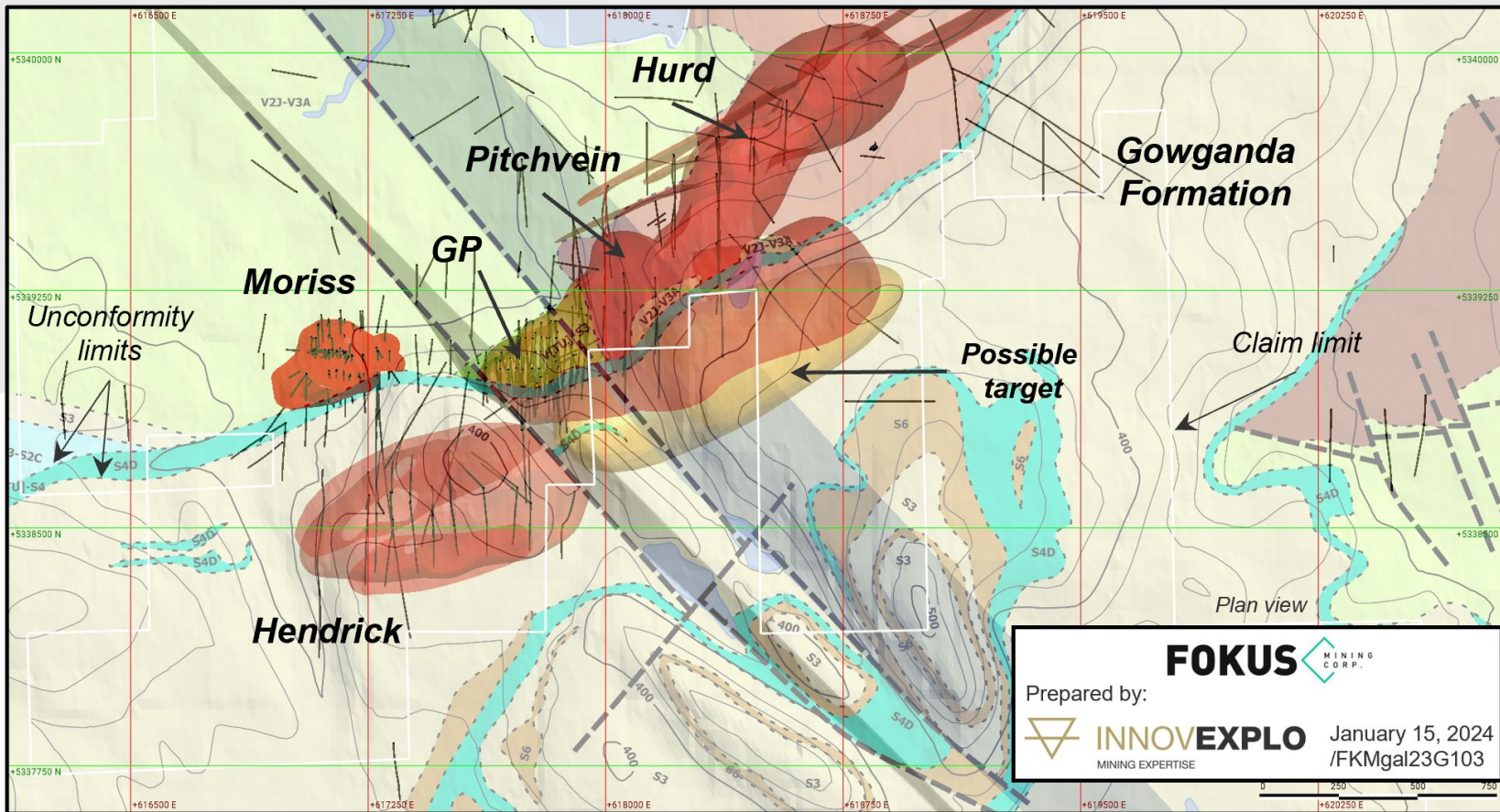
**FOKUS** MINING CORP.

Prepared by:  
 INNOVEXPLO  
MINING CORPORATION

January 15, 2024  
 /FKMgal23G103







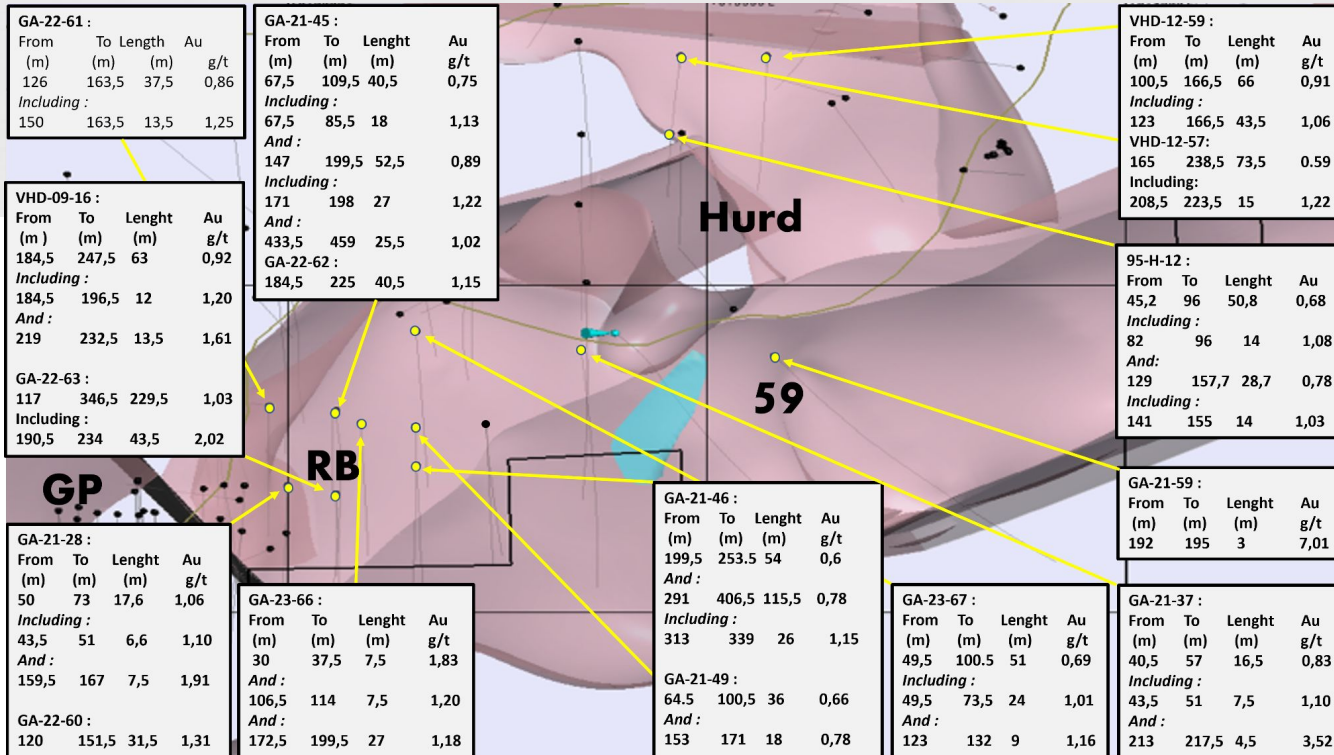
**FOKUS** MINING CORP.

Prepared by:

**INNOVEXPLO** MINING EXPERTISE

January 15, 2024 /FKMgal23G103

# THE NEWLY DISCOVERED RB ZONE





GALLOWAY PROPERTY

# EXPLORATION BUDGET

**Exploration budget: \$1.0-2.0 million**

\*6 000 - 10 000 m of drilling on Galloway





## WHY INVEST IN THE **GALLOWAY PROJECT?**



**SEVERAL MINERALIZED  
ZONES ON THE  
PROPERTY**



**COMPLETED OVER 40,000 M  
OF DRILLING IN 2020-2022**



**IN A PROLIFIC GOLD  
MINING DISTRICT**



**OPEN PIT AND  
UNDERGROUND POTENTIAL**



**BEST JURISDICTION IN  
CANADA WITH A STRONG  
MANAGEMENT**



**MULTI-MILLION OUNCES OF  
GOLD POTENTIAL**





FOKUS MINING CORPORATION  
**CAPITAL STRUCTURE**



# SHARE STRUCTURE

**SHARES  
OUTSTANDING:**

(as of July 19, 2023)

**105,528,793**

**OPTIONS:**  
(avg. price of 0.15)

**7,690,000**

**WARRANTS:**  
(avg. price of 0.19)

**39,733,750**

**FULLY DILUTED  
SHARES:**

**152,952,543**

TSX.V : **FKM**

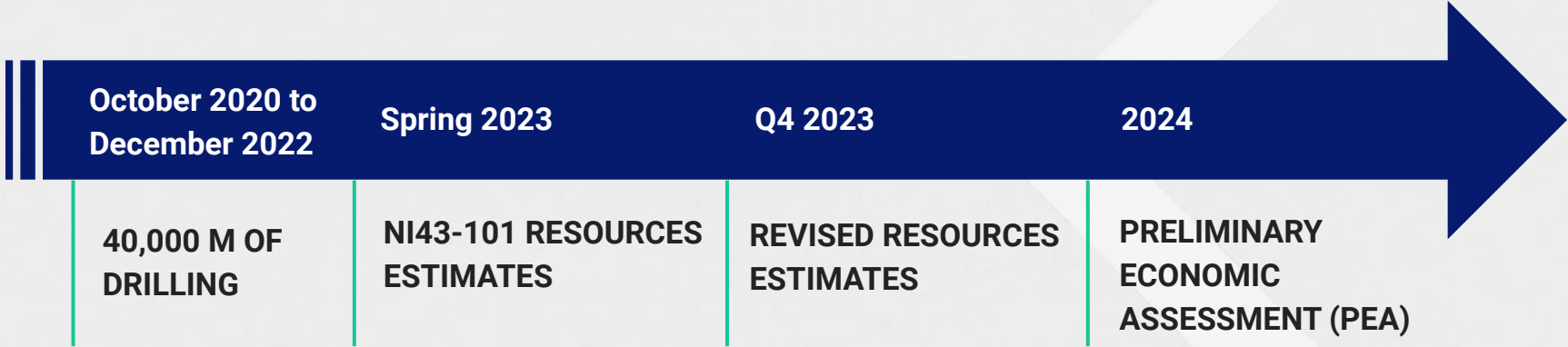
Frankfurt : **F7E1**

OTCQB: **FKMCF**





# NEXT STEPS AND TIMELINE



# CONTACT US

**Head office:**

147 Quebec Avenue, Rouyn-Noranda  
Quebec, Canada J9X 6M8

**Postal address:**

P.O. Box 491, Rouyn-Noranda  
Quebec, Canada J9X 5C4

**Administration:** 819-762-0609

**Shareholder request :** 514-918-3125

**MarketSmart agent :** 604-999-7018

**Fax:** 819-762-0097

**Mr. Jean Rainville, CEO**

**Mr. Sylvain Champagne, CFO**

**Email:** [info@fokusmining.com](mailto:info@fokusmining.com)

**Auditors:** Raymond Chabot Grant Thornton

**Transfer Agent:** Computershare

**Legal Advisor:** Fasken Martineau DuMoulin  
S.E.N.C.R.L., s.r.l.

**FOKUS**  MINING  
CORP.